



Example of current industrial nonslip surfaces that are used.

Non-slip surfaces that cover the entire stair.





Example of current industrial materials that are used to add visibility and non slip surfaces. Notice that they are bright, and may clash with interiors and evoke industrial feelings.

Non-slip surfaces that cover the edge of the stairs.

**STAIR
WEAR**



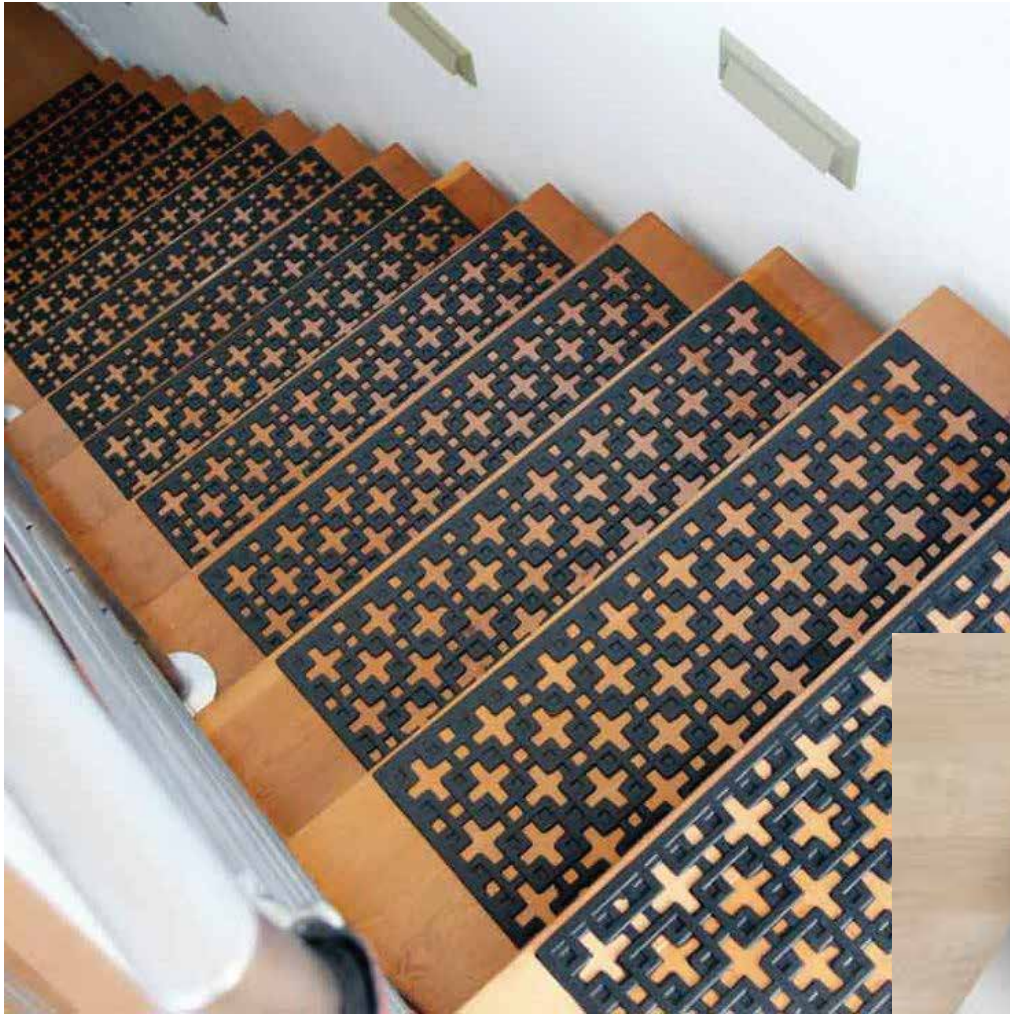
StairWear will produce products that feature natural materials that blend in



Non-slip surfaces that cover the edge of the stairs.



**STAIR
WEAR**



Stairwear will use patterns that are reminiscent of a “stiff carpet weave” to get more grip and will blend with interior surfaces like wood or carpet.

Possibly threads of white glow material will be woven into the “stiff carpet weave” for better visibility in low light.

Non-slip surfaces that cover the entire stair.



StairWear Aesthetics

StairWear wants to continue the experience of living life normally for adults, and that means taking into consideration the aesthetics of a home.

Therefore, StairWear products will feature a line of materials that are modern, natural colors with cleanable surfaces with prices that are comparable to industrial materials.

“Elderly people that are still living in their homes and are still active enough to handle stairs have a certain level of personal pride I wouldn’t want to insult or infringe on.”

Amanda, Interior Designer

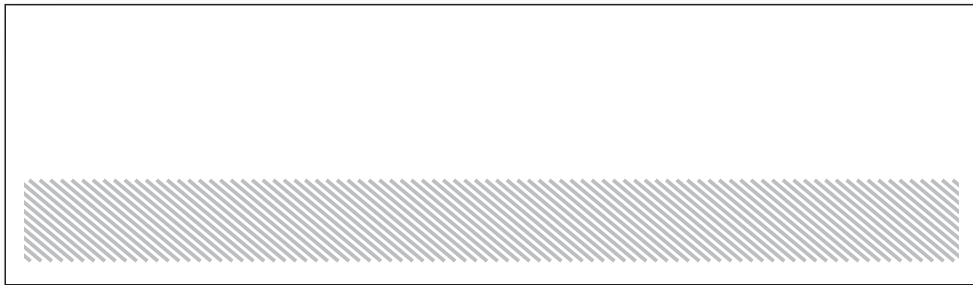
StairWear wants to continue the experience of living life normally for adults, and that means taking into consideration the aesthetics of a home.

Modern patterns that are suitable for indoor use and blend with existing decor

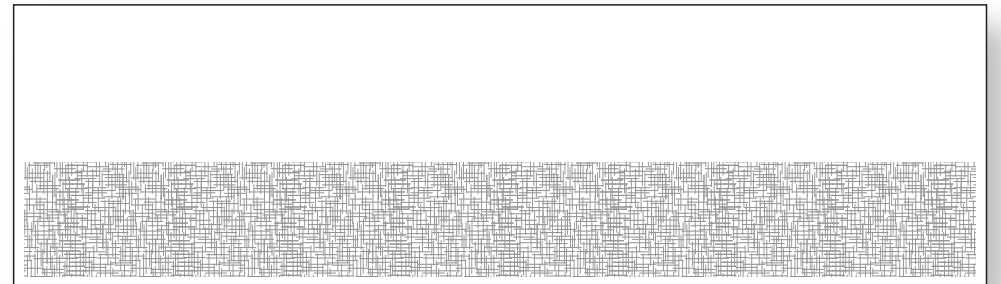
Glow materials that are white until low visibility

Stiff carpet weave pattern to blend with interiors and offer maximum grip.

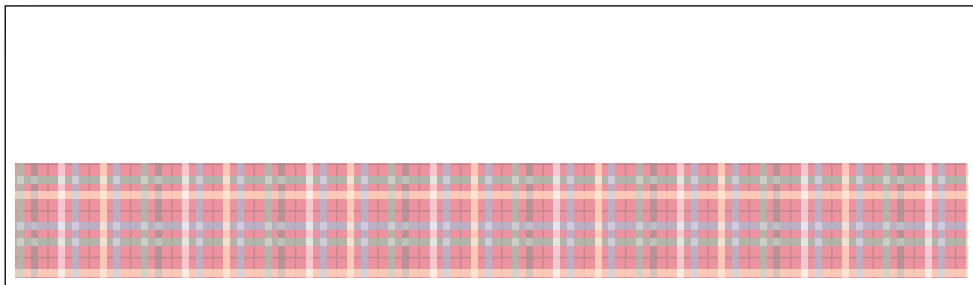
Modern patterns to fit the home.



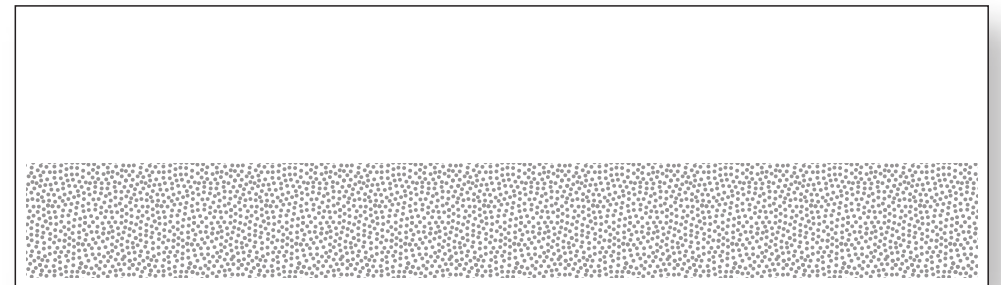
Nautical Stripes



Linen



Plaid



Pebbles

Colors to blend with interiors and wood

