

Education Pathfinding network

Pathfinding Higher Education throughout Life

Socio-cultural Network for learning

1 The call for adventure

SIGN UP/ OPEN ADMISSION / enroll

Explore or take admission test: personality, learning styles and aptitude tests



personality test

To suggest compatible people to learn together

Learning styles test

to suggest optimal learning methods

Aptitude test

to suggest learning path

The tests are needed to suggest like minded and compatible group of students/educator (to match and recommends users with groups of students for peer group study) because compatible group of people are essential for learning Also To map individual most effective learning style (to match with relevant methods / tools of how a subject can be learn/approached)

Design your own education and or follow the unique path of others

2 The pathfinding landscape

Choose/Follow your curiosities and ambitions



BY disciplines

- Pure Science
Philosophy
linguistic
- Applied Science
- Interdisciplinary science
- etc

By of expertise

- leadership
Design
Technology
Medical
- Researcher
Advocate
Banking
Engineering
Research

By skill/ product

- Game craft
pop culture
furniture
music album
app
snail farm
etc

By Real world application

- Teaching
Start-ups
companies
initiatives
non Profit

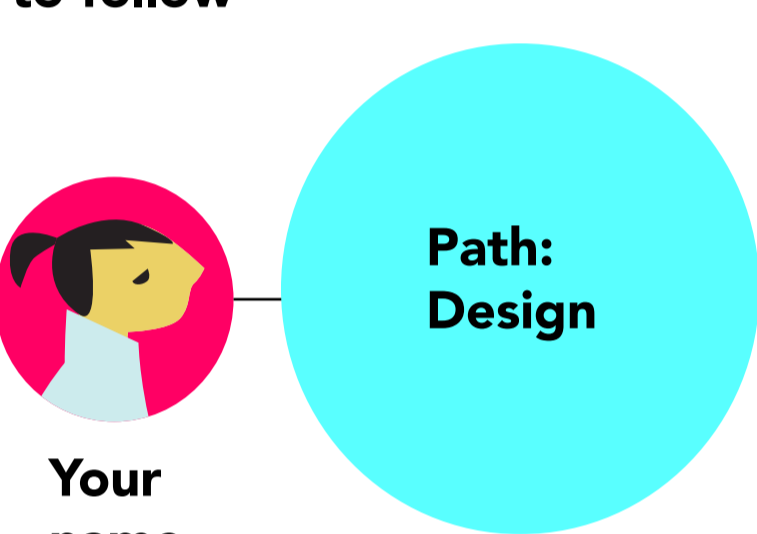
By Real world Challenge

- Poverty
human trafficking
income Inequality

3 The path EXAMPLE

Start your life education path

Paths to follow

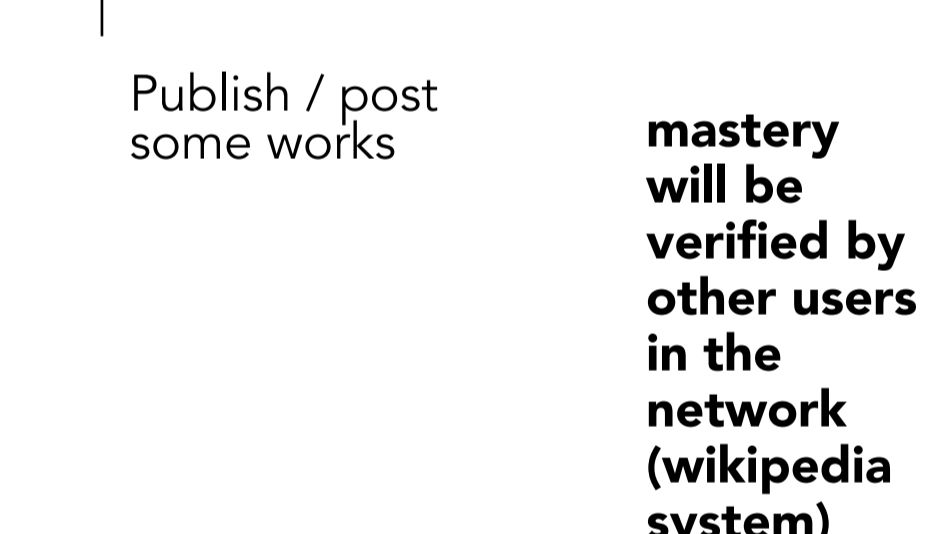
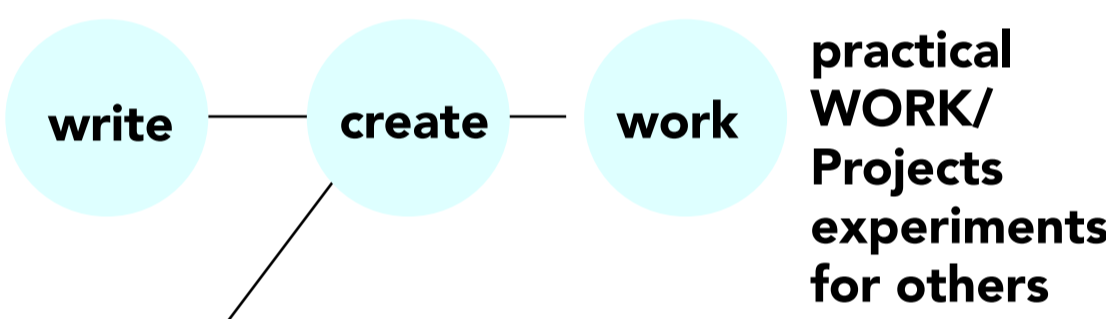
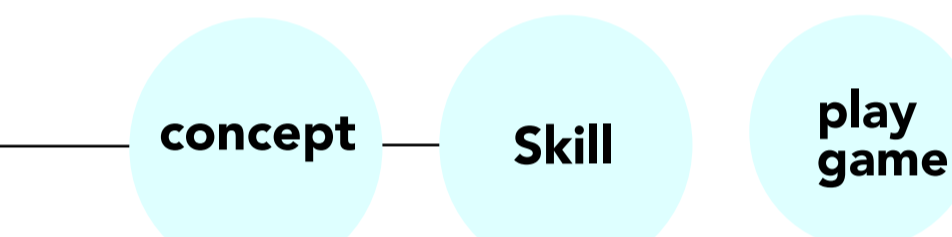
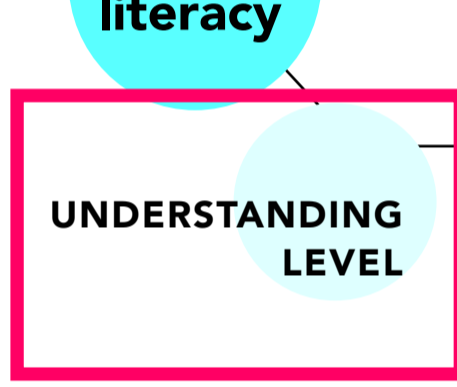


The beaten Paths (a semester)

BASIC path I

PATH CREATED BY

Visual literacy



BASIC path I

PATH CREATED BY

Typography

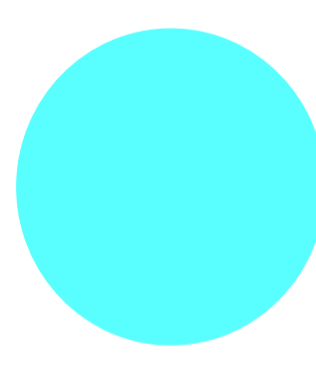
and so-on

4 The pathfinding mates, guide and mentor

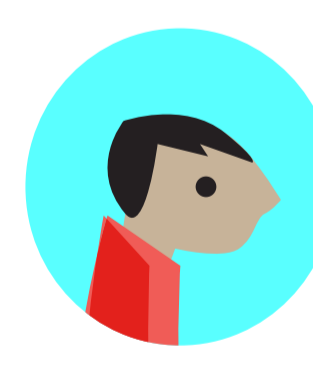
Share your education path

Match and Find partners, a class group/ follow your own path

Follow People with similar choice



Browse Mentors in this path



TIM BROWN
education path



JOE GERBER
education path

Individual education path

Study Group/ class path

