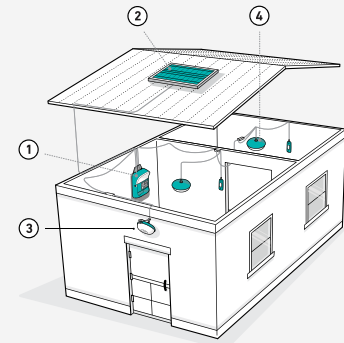


BioLite SolarHome 620

Solar-Powered Light, Charging & Radio System



- 1 Control box with radio, mp3 player, light and USB power out
- 2 6 watt solar panel
- 3 Motion sensor security light
- 4 Ceiling mounted lights

The BioLite SolarHome 620 brings modern lighting, energy, and entertainment to the off-grid home. The system lights up multiple rooms via three hanging lights (including one motion-activated light) and has an additional light on the Control Box. The Control Box houses an in-built FM radio and MP3 player and two USB ports to charge mobile phones and other devices. The system's 20Wh battery is recharged by a 6W, high efficiency solar panel designed to maximize power.



4 Lights, 400 Lumens

Each light is 10x brighter than a kerosene lamp



Charges 2 Phones

Includes USB charging and shelf for easy storage



Radio + MP3 Player

Access music via SD card or tune into the radio



Motion Sensor = Security

Motion sensing hanging light protects your home



14 Hour Run Time

1 day of sun can run all 4 lights on low for 14 hours



BioPAY Enabled

PAYGO compatible with BioLite BioPAY, Mobisol SolarHub & Angaza Energy Hub

Tech Specs

BATTERY

3300 mAh @ 6.5 V
(20 Wh), LiFePO4

LUMENS

4 lights at 100 Lm
per light

OUTPUTS

USB Charge Out x2,
DIN Port, Light Port x2,
Light Junctions x3

RUN TIME

With all 4 lights on, 1 day of
full sun provides:

14 hours (LO brightness)
7 hours (MED brightness)
4.5 hours (HI brightness)

CERTIFICATIONS



SOLAR PANEL

6 watt output

DIMENSIONS

Control Box
200 x 154 x 68 mm
Hanging Lights (each)
150 x 140 x 82 mm
Solar Panel
290 x 190 x 16 mm

IN THE BOX

Control Box, 2 Hanging Lights,
1 Security Light, 1 Solar Panel,
USB Adapter, Wall Screws

TOTAL WEIGHT

1570 g (3.46 lbs)

DIMMABLE

Dim hanging lights via
mounted switch

PAYGO COMPATIBILITY

